

Access to The SSE Arena, Belfast



Booking Tickets & Accessible Seating



You can book tickets by going to the Arena Box Office or on the Ticketmaster website



If you need accessible seating or a free carers ticket, please call: 028 9073 9074



You can use our text phone number 028 9073 9174 to book tickets



There are some wheelchair spaces. Call as early as you can to book these



If you are deaf or have trouble hearing we have induction loops that you can pick up from the concierge desk.



If you are blind or have trouble seeing you might be able to have a seat closer to the stage. Call 028 9073 9074 book tickets

How Can I Access The Box Office



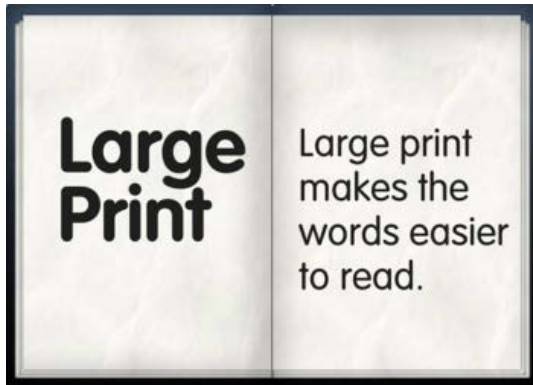
The Box Office is on the ground floor at the front of the venue and is fully accessible with:



A low level counter



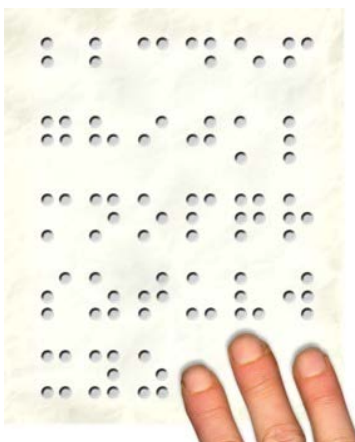
Ramp access



Information in large type on request



An induction loop



Information in Braille on request –this needs to be requested in advance and you may have to wait for it to be done

Getting to the venue



Parking

The nearest public car park is at the front of the Arena



There are disabled parking spaces on all levels of the car park



The distance from the car park exit to the venue is approximately 30 metres



There is level access across the road



Blue Badge parking

There are Blue Badge parking bays in the main car park.



Drop off

You can be dropped off on the main road, but you cannot park here.



Taxis
Taxis will drop off at the turning circle at the Odyssey Pavilion.



Buses
The nearest bus stops are at the front of the Arena.

Getting into the venue



You can get in to The SSE Arena at the main doors. The priority queue for disabled access is to the right



For some events, there is also access via the Odyssey Pavilion

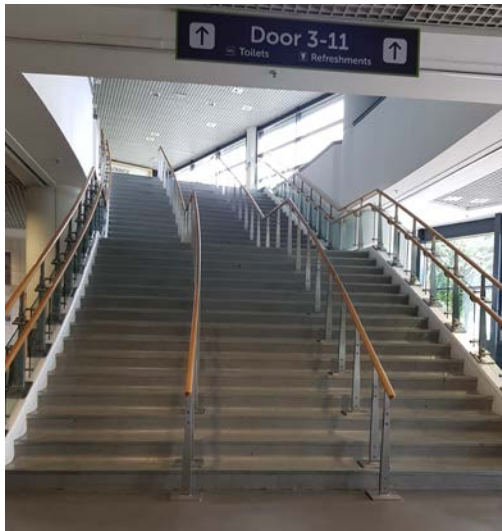


If you need early access away from crowds, or you cannot queue, please call 028 9073 9074

Getting around the venue



You can get around the SSE Arena by using the lifts



You can also use the stairs

In the Auditoriums, Stewards can help you get to your seat

Accessible Toilets



There are accessible toilets on all floors

Food and Drink



There are a number of places to buy food and drink at the Arena.

They have low counters at one end.

Assistance Dogs



You can bring your assistance dog to the SSE Arena

Our staff can look after the dog when you are watching the show

Sound levels & strobe lighting



The SSE Arena can't change how loud a show is, but if you ask we can give you earplugs



Some shows will have smoke and strobe lighting

There will be information on screens to let you know for each show

Emergencies



If there is an emergency, there will be an alarm and stewards will help you outside



If you need to use an evacuation chair the staff can help you and you can ask them

Medical Assistance



If you are ill you can tell a steward and they will go and find someone to help you



There is a First Aid Room where you can go if you are ill, or if you want some quiet time.

You can ask a steward to take you there.



If you are worried or need help please speak to a steward who will help you, or make your way to the concierge desk in the foyer.

Feedback and Contacting The SSE Arena Belfast



If you have any questions, or want to tell somebody how you feel about access at the The SSE Arena you can:

| | |
|---|---|
|  | Call us: 028 90766000 |
|  | Email us: customerservices@ssearenabelfast.com |
|  | Send us a letter: SSE Arena, Belfast 2 Queens Quay Belfast, BT3 9QQ |
|  | Or come to see us at the Box Office, we would be happy to see you |

Published: August 2017
Review Date: June 2018